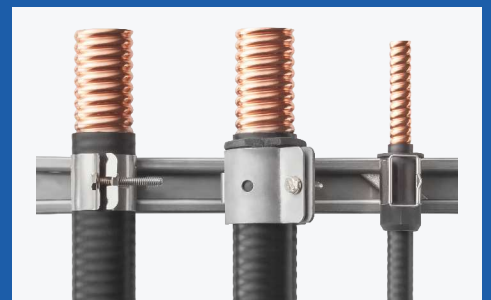




**RFS Technologies**  
an Amphenol Company

# WAVEGUIDES & ACCESSORIES SELECTION GUIDE

Edition 1 rev. A | 02.2024



# RFS TECHNOLOGIES, AN AMPHENOL COMPANY

## TABLE OF CONTENTS

### INTRODUCTION

FLEXWELL® Elliptical Waveguide  
[portfolio overview](#) 1

### ELLIPTICAL WAVEGUIDE

Specifications for the most reliable waveguides,  
connectors and accessories [in the industry](#) 2

### TWISTFLEX

A complete portfolio of EIA  
[flexible waveguides](#) and IEC models on request 8

### RECTANGULAR COMPONENTS

Rectangular waveguide components  
[to make any connection, anywhere](#) 9

### PRESSURIZATION PRODUCTS

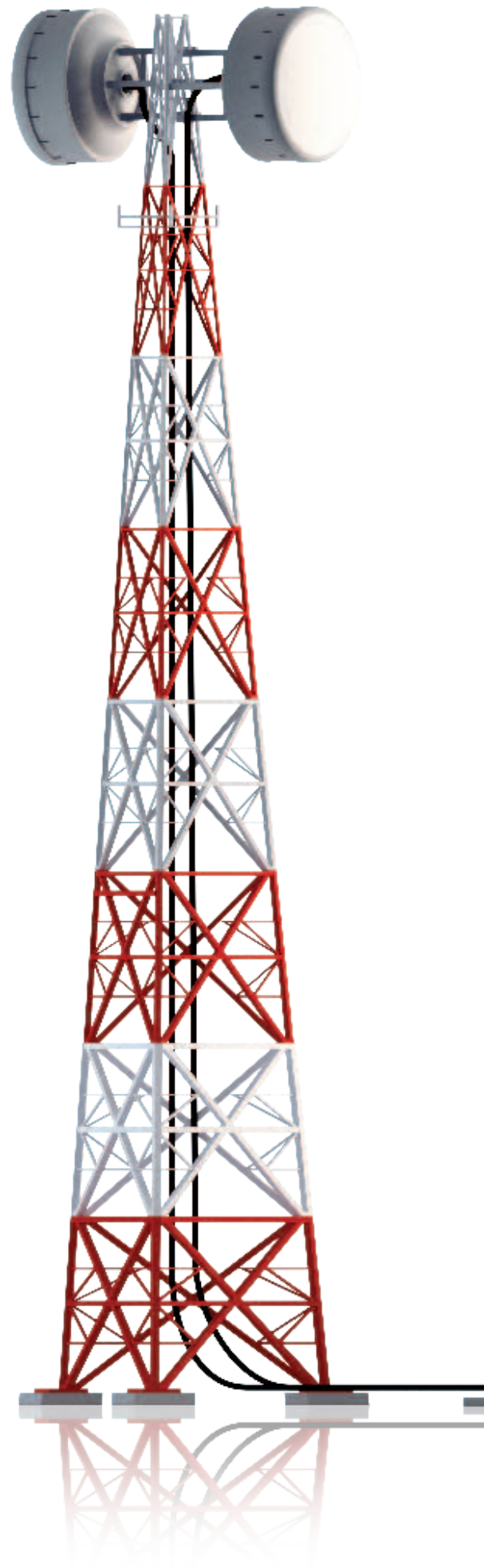
Dehydrators to prevent moisture, condensation and  
degradation in performance, and a vast array of  
products for [installation,](#)  
[operation and maintenance](#) 10

### COMPLETE SOLUTIONS

Everything you need to [support your](#)  
[complete waveguide systems](#) 11

### MODEL STRUCTURES

Understanding Waveguide and Twistflex  
[model numbers](#) 12



# RFS TECHNOLOGIES, AN AMPHENOL COMPANY OFFERS A COMPLETE PORTFOLIO OF THE HIGHEST QUALITY & MOST RELIABLE WAVEGUIDES FOR NORTH AMERICA APPLICATIONS

We provide trusted and reliable solutions for all long haul, mobile, satellite and radar application needs through its broad portfolio of high quality FLEXWELL® Elliptical Waveguides, Connectors, Components, Tools and Pressurization Products.



FLEXWELL® products have been used in thousands of successful installations worldwide. They are the highest quality, best performing, and most reliable elliptical waveguides in the industry.

For more than 50 years, FLEXWELL elliptical waveguides have successfully supplemented traditional rigid rectangular and circular waveguide configurations for the transmission of RF energy at microwave frequencies. Available in a wide variety of premium and standard models, FLEXWELL is constructed of longitudinally continuous seam welded, highly conductive copper tube, corrugated and precision formed into an elliptical cross section. It is manufactured in continuous lengths using a special seam welding process. With FLEXWELL, our customers benefit from:

- Portfolio of elliptical waveguides that cover the entire range of microwave frequencies
- Unique corrugation design for maximum strength and flexibility
- Excellent electrical performance
- Low attenuation and good return loss (VSWR as low as 1.06); highest average power
- 24 hour pressure test performed on every waveguide
- Reduced installation cost and time compared to using rigid rectangular waveguides
- Easy transportation in coils or on drums
- Training and superior technical support

Additionally, we offer a full range of options, connectors, pressurization equipment and accessories to support your end-to-end radio link network. RFS Technologies, Inc. offers tuneable connectors for premium performance waveguides and non-tuneable connectors for standard performance waveguides according to the EIA standard. These connectors are manufactured from brass forgings and are very simple and easy to install with basic hand tools, no expensive flanging tools are required. Our connectors based on the IEC standard are all fixed tuned. Together with the dedicated flanging tools and premium performance waveguides, these IEC connectors meet the highest VSWR / return loss requirements over the complete frequency band without tuning.

## RFS Technologies offers the elliptical waveguides to cover 6, 7, 8 and 11GHz

Frequency				L6GHz		U6 GHz		7GHz	8 GHz		10 GHz				11 GHz
	5.6	5.85	5.9	5.925	6.4	6.425	7.1	7.125	7.75	8.5	10	10.2	10.3	10.5	11.7
Model Number	EP60						EP78					EP105			
				EP65											

Note: Each waveguide is available in standard and premium performance model. Specify the performance level (STD or PREM) when ordering

# FLEXWELL ELLIPTICAL WAVEGUIDE

**EP60 Series: 5.6-6.425 GHz**



## ORDERING INFORMATION | EIA: WR137 | IEC: R70

Maximum Frequency Band, GHz	Standard Waveguide Model Number	Premium Waveguide Model Number
4.50-6.425	EP60 (STD*)	EP60 (PREM*) / EP60JFN**

\*Specify performance level when ordering \*\*Flame and fire retardant jacket option available upon demand

## PRODUCT SPECIFICATIONS

GENERAL SPECIFICATIONS			
Dimensions over Jacket	mm, in	55 x 33	2.2 x 1.3
Weight	kg/m, lb/ft	1.1	0.74
Min. Bending Radii, without rebending E-Plane	mm, in	200	8
Min. Bending Radii, without rebending H-Plane	mm, in	550	22
Min. Bending Radii, with rebending E-Plane	mm, in	300	12
Min. Bending Radii, with rebending H-Plane	mm, in	800	31
Jacket Type	J JFN	PE, Black PE, Flame Retardant, Black	
Max. Twist	degree, m, ft	4	1.2
Max. Operating Pressure	bar, psi	0.5	7
Max. Pulling Length per Hoisting Grip	m, ft	100	305
Standard Hanger Spacing	m, ft	0.9	3

TEMPERATURE SPECIFICATIONS			
Installation	°C, °F	-40 to 60	-40 to 140
Storage	°C, °F	-70 to 85	-94 to 185
Operation	°C, °F	-50 to 85	-58 to 185

ELECTRICAL SPECIFICATIONS			
		EP60 PREM	EP60 STD
Operating Frequency Band	GHz	5.6-6.425	
Low Band Attenuation	dB/100m, dB/100ft	4.15, 1.26	
Mid Band Attenuation	dB/100m, dB/100ft	3.95, 1.2	
High Band Attenuation	dB/100m, dB/100ft	3.8, 1.16	
Max. VSWR / Return Loss	- / dB	1.062 / 30.5	1.15 / 23.1

## ACCESSORIES

### EIA Accessories

Model Number	Description
<a href="#">C137-060EG</a>	Connector EP60 CPR 137G fix-tunned
<a href="#">C137-060TG</a>	Connector EP60 CPR 137G tunable
<a href="#">G343-060FG</a>	Connector EP60 UG-343/344U fix-tunned
<a href="#">C137-060TG-PRETUNED</a>	Connector EP60 CPR 137G pre-tuned
<a href="#">PW-C137</a>	Pressure window CPR 137G, brass
<a href="#">PW-G137</a>	Pressure window UG-343/344U, brass

### Standard Accessories

Model Number	Description
<a href="#">CLAMP-060</a>	Clamp EP60, bolt -on
<a href="#">ANGLE-UI</a>	Universal angle adaptor, stainless steel, kit of 10
<a href="#">GKIT-24-060</a>	Grounding kit EP60, 6AWG grounding wire 24"
<a href="#">GKIT-60-060</a>	Grounding kit EP60, 6AWG grounding wire 60"
<a href="#">WFT-060</a>	Single wall/roof feed through system EP60
<a href="#">FTP4-2X2*</a>	4 cable (2x2) wall feed through panel
<a href="#">BOOT4-060</a>	Boot EP60 for FTP4-xx
<a href="#">HOIST1-158L</a>	Hoisting grip, open, E58, E60, E65

\*FTP for other cable amount is available

### IEC Accessories

Model Number	Description
<a href="#">D70-060FP-W</a>	Connector 154 IEC-PDR 70 (5.6-6.425 GHz)
<a href="#">PW070-V-1</a>	Pressure window, light type, UDR 70, brass
<a href="#">SHIM070-D-1</a>	Shim for PDR 70, copper beryllium
<a href="#">FDIE-U060</a>	Flanging die for basic tool FTOOL-U038130
<a href="#">FTOOL-U038130</a>	Basic Flanging Tool for E38 to E130 waveguide
<a href="#">P2000-001</a>	Tube of Plast 2000 20ccm

### Premium Accessories

Model Number	Description
<a href="#">CLAMP-R-060</a>	Universal clamp with clamp lining EP60
<a href="#">GKIT-24-060P</a>	Grounding kit, Grounding wire 7AWG (16 mm²) 24"



**RFS Technologies**  
an Amphenol Company

# FLEXWELL

## ELLIPTICAL WAVEGUIDE

**EP65 Series: 5.9-7.125 GHz**



### ORDERING INFORMATION | IEC: R70 | EIA: WR137

Maximum Frequency Band, GHz	Standard Waveguide Model Number	Premium Waveguide Model Number
5.00-7.125	EP65 (STD*)	EP65 (PREM*) / EP65JFN**

\*Specify performance level when ordering \*\*Flame and fire retardant jacket option available upon demand

### PRODUCT SPECIFICATIONS

GENERAL SPECIFICATIONS			
Dimensions over Jacket	mm, in	51 x 30	2.0 x 1.2
Weight	kg/m, lb/ft	0.75	0.5
Min. Bending Radii, without rebending E-Plane	mm, in	200	8
Min. Bending Radii, without rebending H-Plane	mm, in	500	20
Min. Bending Radii, with rebending E-Plane	mm, in	300	12
Min. Bending Radii, with rebending H-Plane	mm, in	600	24
Jacket Type	J JFN	PE, Black	PE, Flame Retardant, Black
Max. Twist	degree, m, ft	5	1.5
Max. Operating Pressure	bar, psi	0.5	7
Max. Pulling Length per Hoisting Grip	m, ft	100	305
Standard Hanger Spacing	m, ft	0.9	3

TEMPERATURE SPECIFICATIONS			
Installation	°C, °F	-40 to 60	-40 to 140
Storage	°C, °F	-70 to 85	-94 to 185
Operation	°C, °F	-50 to 85	-58 to 185

ELECTRICAL SPECIFICATIONS			
		EP65 PREM	EP65 STD
Operating Frequency Band	GHz	5.9-7.125	
Low Band Attenuation	dB/100m, dB/100ft	4.9, 1.49	
Mid Band Attenuation	dB/100m, dB/100ft	4.5, 1.37	
High Band Attenuation	dB/100m, dB/100ft	4.25, 1.3	
Max. VSWR / Return Loss	- / dB	1.062 / 30.5	1.15 / 23.1

### ACCESSORIES

#### EIA Accessories

Model Number	Description
<a href="#">C137-065FG</a>	Connector EP65 CPR 137G fix-tuned
<a href="#">C137-065TG</a>	Connector EP65 CPR 137G tunable
<a href="#">G343-065FG</a>	Connector EP65 UG-343/344U fix-tuned
<a href="#">G343-065TG</a>	Connector EP65 UG-343/344U tunable
<a href="#">C137-065TG-PRETUNED</a>	Connector EP60 CPR 137G pre-tuned
<a href="#">PW-C137</a>	Pressure window CPR 137G, brass
<a href="#">PW-G137</a>	Pressure window UG-343/344/U, brass

#### Standard Accessories

Model Number	Description
<a href="#">CLAMP-114</a>	Clamp EP65, bolt -on
<a href="#">ANGLE-UI</a>	Universal angle adaptor, stainless steel, kit of 10
<a href="#">GKIT-24-065</a>	Grounding kit EP65, 6AWG grounding wire 24"
<a href="#">GKIT-60-065</a>	Grounding kit EP65, 6AWG grounding wire 60"
<a href="#">WFT-065</a>	Single wall/roof feed through system EP65
<a href="#">FTP4-2X2*</a>	4 cable (2x2) wall feed through panel
<a href="#">BOOT4-065</a>	Boot EP65 for FTP4-xx
<a href="#">HOIST1-158L</a>	Hoisting grip, open, E58, E60, E65

\*FTP for other cable amount is available

#### IEC Accessories

Model Number	Description
<a href="#">D70-065FG</a>	Connector 154 IEC-PDR 70 (5.9-7.15 GHz)
<a href="#">PW070-V-1</a>	Pressure window, light, type, UDR 70, brass
<a href="#">SHIM070-D-1</a>	SHIM R 70 for PDR 70, copper beryllium
<a href="#">FDIE-U065</a>	Flanging die for basic tool FTOOL-U038130
<a href="#">FTOOL-U038130</a>	Basic Flanging Tool for E38 to E130 waveguide

#### Premium Accessories

Model Number	Description
<a href="#">GKIT-24-065P</a>	Grounding kit, Grounding wire 7AWG (16 mm <sup>2</sup> ) 24"
<a href="#">CLAMP-R-065</a>	Universal clamp with clamp lining



**RFS Technologies**  
an Amphenol Company

# FLEXWELL

## ELLIPTICAL WAVEGUIDE

**EP78 Series: 7.1-8.5 GHz**



**ORDERING INFORMATION | EIA: WR137, WR112 | IEC: R70, R84**

Maximum Frequency Band, GHz	Standard Waveguide Model Number	Premium Waveguide Model Number
5.90-8.50	EP78 (STD*)	EP78 (PREM*) / EP78JFN**

\*Specify performance level when ordering \*\*Flame and fire retardant jacket option available upon demand

### PRODUCT SPECIFICATIONS

GENERAL SPECIFICATIONS				TEMPERATURE SPECIFICATIONS			
Dimensions over Jacket	mm, in	44 x 26	1.7 x 1.0	Installation	°C, °F	-40 to 60	-40 to 140
Weight	kg/m, lb/ft	0.6	0.4	Storage	°C, °F	-70 to 85	-94 to 185
Min. Bending Radii, without rebending E-Plane	mm, in	200	8	Operation	°C, °F	-50 to 85	-58 to 185
Min. Bending Radii, without rebending H-Plane	mm, in	500	20	ELECTRICAL SPECIFICATIONS			
Min. Bending Radii, with rebending E-Plane	mm, in	250	10				
Min. Bending Radii, with rebending H-Plane	mm, in	600	24				
Jacket Type	J JFN	PE, Black PE, Flame Retardant, Black		Operating Frequency Band	GHz	EP78 PREM EP78 STD	
Max. Twist	degree, m, ft	5	1.5	Low Band Attenuation	dB/100m, dB/100ft	7.1-8.5	
Max. Operating Pressure	bar, psi	0.5	7	Mid Band Attenuation	dB/100m, dB/100ft	6.2, 1.89	
Max. Pulling Length per Hoisting Grip	m, ft	100	305	High Band Attenuation	dB/100m, dB/100ft	5.8, 1.77	
Standard Hanger Spacing	m, ft	0.9	3	Max. VSWR / Return Loss	- / dB	1.062 / 30.5	1.15 / 23.1

### ACCESSORIES

#### EIA Accessories

Model Number	Description
<a href="#">C137-078FG</a>	Connector CPR 137G 7.125 – 7.75GHz fix-tuned
<a href="#">C137-078TG</a>	Connector CPR 137G 7.125 – 7.75GHz tunable
<a href="#">C112-078FG</a>	Connector CPR 112G 7.125 – 8.5GHz fix-tuned
<a href="#">C112-078TG</a>	Connector CPR 112G 7.125 – 8.5GHz tunable
<a href="#">C112-078TG-PRETUNED</a>	Connector CPR 112G 7.125 – 8.5GHz pre-tuned
<a href="#">G51-078FG</a>	Connector UG-51/52/U 7.125 – 8.5GHz fix-tuned
<a href="#">G51-078TG</a>	Connector UG-51/52/U 7.125 – 8.5GHz tunable
<a href="#">PW-C137</a>	Pressure window CPR 137G, brass
<a href="#">PW-C112</a>	Pressure window CPR 112G, brass
<a href="#">PW-G112</a>	Pressure window UG-51/52/U, brass

#### Standard Accessories

Model Number	Description
<a href="#">CLAMP-078</a>	Clamp EP78, bolt-on
<a href="#">ANGLE-UI</a>	Universal angle adaptor, stainless steel, kit of 10
<a href="#">GKIT-24-078</a>	Grounding kit EP78, 6AWG grounding wire 24"
<a href="#">GKIT-60-078</a>	Grounding kit EP78, 6AWG grounding wire 60"
<a href="#">WFT-078</a>	Single wall/roof feed through system EP78
<a href="#">FTP4-2X2*</a>	4 cable (2x2) wall feed through panel
<a href="#">BOOT4-078</a>	Boot EP78 for FTP4-xx
<a href="#">HOIST1-114L</a>	Hoisting grip, open, EP70, EP78

#### IEC Accessories

Model Number	Description
<a href="#">D70-078FG</a>	Connector 154 IEC-PDR 70 (7.1 - 8.5 GHz)
<a href="#">D84-078FG</a>	Connector 154 IEC-PDR 84 (7.1 - 8.5 GHz)
<a href="#">B84-078FG</a>	Connector 154 IEC-PBR 84 (7.1-8.5 GHz)
<a href="#">PW070-V-1</a>	Pressure window, light type, UDR 70, brass
<a href="#">PW084-V-1</a>	Pressure window, light type, UDR 84, brass
<a href="#">PW084-W-1</a>	Pressure window, light type, UBR 84, brass
<a href="#">SHIM070-D-1</a>	Shim for PDR 70, copper beryllium
<a href="#">SHIM084-D-1</a>	Shim for PDR 84, copper beryllium
<a href="#">SHIM084-B-1</a>	Shim for PBR 84, copper beryllium
<a href="#">FDIE-U078</a>	Flanging die for basic tool FTOOL-U038130
<a href="#">FTOOL-U038130</a>	Basic Flanging Tool for E38 to E130 waveguide

#### Premium Accessories

Model Number	Description
<a href="#">CLAMP-R-078-E</a>	Universal clamp with clamp lining EP78
<a href="#">GKIT-24-078P</a>	Grounding kit, Grounding wire 7AWG (16 mm²) 24"

\*FTP for other cable amount is available



**RFS Technologies**  
an Amphenol Company



# FLEXWELL

## ELLIPTICAL WAVEGUIDE

**EP105 Series:** 10.0-11.7 GHz



### ORDERING INFORMATION | EIA: WR90 | IEC: R100

Maximum Frequency Band, GHz	Standard Waveguide Model Number	Premium Waveguide Model Number
8.10-11.70	<a href="#">EP105 (STD*)</a>	<a href="#">EP105 (PERM*)</a> / <a href="#">EP105JFN*</a>

\*Specify performance level when ordering \*\*Flame and fire retardant jacket option available upon demand

### PRODUCT SPECIFICATIONS

GENERAL SPECIFICATIONS			
Dimensions over Jacket	mm, in	33 x 20	1.3 x 0.8
Weight	kg/m, lb/ft	0.5	0.34
Min. Bending Radii, without rebending E-Plane	mm, in	130	5
Min. Bending Radii, without rebending H-Plane	mm, in	280	11
Min. Bending Radii, with rebending E-Plane	mm, in	150	6
Min. Bending Radii, with rebending H-Plane	mm, in	300	12
Jacket Type	J	PE, Black	
Max. Twist	degree, m, ft	6	1.8
Max. Operating Pressure	bar, psi	0.5	7
Max. Pulling Length per Hoisting Grip	m, ft	100	305
Standard Hanger Spacing	m, ft	0.6	2

TEMPERATURE SPECIFICATIONS			
Installation	°C, °F	-40 to 60	-40 to 140
Storage	°C, °F	-70 to 85	-94 to 185
Operation	°C, °F	-50 to 85	-58 to 185

ELECTRICAL SPECIFICATIONS			
		EP105 PREM	EP105 STD
Operating Frequency Band	GHz	10.0 - 11.7	
Low Band Attenuation	dB/100m, dB/100ft	9.4, 2.87	
Mid Band Attenuation	dB/100m, dB/100ft	9.1, 2.77	
High Band Attenuation	dB/100m, dB/100ft	8.9, 2.71	
Max. VSWR / Return Loss	- / dB	1.062 / 30.5	1.15 / 23.1

### ACCESSORIES

#### EIA Accessories

Model Number	Description
<a href="#">C90-105FG</a>	Connector CPR 90G (10.5-11.7 GHz) fix-tuned
<a href="#">C90-105TG</a>	Connector CPR 90G (10.5-11.7 GHz) tunable
<a href="#">C90-105TG-PRETUNED</a>	Connector CPR 90G (10.5-11.7 GHz) pre-tuned
<a href="#">PW-C090</a>	Pressure window CPR 90G, brass

#### Standard Accessories

Model Number	Description
<a href="#">CLAMP-105</a>	Clamp EP105, bolt -on
<a href="#">ANGLE-UI</a>	Universal angle adaptor, stainless steel, kit of 10
<a href="#">GKIT-24-105</a>	Grounding kit EP105, 6AWG grounding wire 24"
<a href="#">GKIT-60-105</a>	Grounding kit EP105, 6AWG grounding wire 60"
<a href="#">WFT-105</a>	Single wall/roof feed through system EP105
<a href="#">FTP4-2X2*</a>	4 cable (2x2) wall feed through panel
<a href="#">BOOT4-105</a>	Boot EP105 for FTP4-xx
<a href="#">HOIST1-78L</a>	Hoisting grip, open, EP100, EP105

\*FTP for other cable amount is available

### Tunable and Pre-Tuned Connectors

A tunable waveguide connector, different than fix-tuned connector, can be adjusted or tuned in the field to achieve optimal electrical performance in operating frequency range. Tuning a waveguide connector involves adjusting the tuning screws in the connector. This process can be done in the field. Customers can also order new pre-tuned connectors from the factory which would save time and simplify installation.

Tuning screws  
in a tunable connector



**RFS Technologies**  
an Amphenol Company

## TWISTFLEX SELECTION GUIDE



Twistflex is fabricated from spiral wound silver plated bronze strip. Twistflex is provided with EIA or IEC flanges. EIA twistflex includes mounting hardware for one flange. In twistflex with different flange on each end, hardware is supplied for both flanges. IEC twistflex includes gaskets and mounting hardware for both flanges. Standard lengths are 24" (60 cm), 36" (90 cm) and 48" (120 cm).

### EIA TWISTFLEX ORDERING INFORMATION

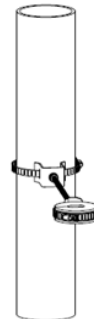
Frequency	Model Number	Flange 1	Flange 2	Length
5.85 - 8.2 GHz	<a href="#">TF137-CC1-012I</a>	CPR137G	CPR137G	12 inch
	<a href="#">TF137-CC1-024I</a>	CPR137G	CPR137G	24 inch
	<a href="#">TF137-CC1-036I</a>	CPR137G	CPR137G	36 inch
	<a href="#">TF137-CC1-048I</a>	CPR137G	CPR137G	48 inch
	<a href="#">TF137-CC1-060I</a>	CPR137G	CPR137G	60 inch
7.05 - 10.0 GHz	<a href="#">TF112-CC1-012I</a>	CPR112G	CPR112G	12 inch
	<a href="#">TF112-CC1-024I</a>	CPR112G	CPR112G	24 inch
	<a href="#">TF112-CC1-036I</a>	CPR112G	CPR112G	36 inch
	<a href="#">TF112-CC1-048I</a>	CPR112G	CPR112G	48 inch
8.2 - 12.4 GHz	<a href="#">TF090-CC1-012I</a>	CPR090G	CPR090G	12 inch
	<a href="#">TF090-CC1-024I</a>	CPR090G	CPR090G	24 inch
	<a href="#">TF090-CC1-036I</a>	CPR090G	CPR090G	36 inch
	<a href="#">TF090-CC1-048I</a>	CPR090G	CPR090G	48 inch

Note: Contact RFS Technologies for other lengths or flange combinations.

### ACCESSORIES

#### EIA Accessories

Model Number	Description
<a href="#">916933</a>	Twistflex hanger assembly WR137
<a href="#">916932</a>	Twistflex hanger assembly WR112
<a href="#">916705</a>	Twistflex hanger assembly WR090



Twistflex hanger assembly includes a twistflex clamp with cushion, a 12 inch threaded rod, and hardware to attach it to the round member of the tower.



**RFS Technologies**  
an Amphenol Company



## RECTANGULAR COMPONENTS SELECTION GUIDE



**During site renovations,** it is not uncommon to come across a mixture of different connector types or sizes between the antenna and the transmitter. For these cases RFS Technologies offers a large variety of rectangular waveguide components like coaxial adaptors, straight sections and E- and H-Bends.

### EIA RECTANGULAR COMPONENTS ORDERING INFORMATION

Frequency	Model Number	Flange 1	Flange 2 / Connector	Length	Description
5.85 - 8.2 GHz	<a href="#">NADP137-C-1-O</a>	CPR137G	N Female Connector		Waveguide to Coax Adaptor
	<a href="#">HB070-CC-1-W-010M</a>	CPR137G	CPR137G	4 inch	90 Degree H Bend
	<a href="#">EB070-CC-1-W-010M</a>	CPR137G	CPR137G	4 inch	90 Degree E Bend
	<a href="#">SW070-CC-1-W-010M</a>	CPR137G	CPR137G	4 inch	Straight Waveguide Section
	<a href="#">FADP-C137-M137</a>	CPR137G	CMR137G	5 inch	Flange Adaptor
	<a href="#">TS137-CC-1-O-006I</a>	CPR137G	CPR137G	6 inch	Waveguide Twist
	<a href="#">TRAN-C137-C112</a>	CPR137G	CPR112G	12 inch	Waveguide Transition
7.05 - 10.0 GHz	<a href="#">NADP112-C-1-O</a>	CPR112G	N Female Connector		Waveguide to Coax Adaptor
	<a href="#">SW112-CW-1-G-004I</a>	CPR112G	UBR84	4 inch	Straight Waveguide Section
	<a href="#">FADP-C112-U112</a>	CPR112G	UG51	5 inch	Flange Adaptor
	<a href="#">TRAN-C137-C112</a>	CPR137G	CPR112G	12 inch	Waveguide Transition
8.2 - 12.4 GHz	<a href="#">NADP090-C-1-O</a>	CPR090G	N Female Connector		Waveguide to Coax Adaptor
	<a href="#">HB090-CC</a>	CPR090G	CPR090G	4 inch	90 Degree H Bend
	<a href="#">EB090-CC</a>	CPR090G	CPR090G	4 inch	90 Degree E Bend
	<a href="#">FADP-C090-M090</a>	CPR090G	CMR090G	5 inch	Flange Adaptor
	<a href="#">TS090-CC-1-O-006I</a>	CPR090G	CPR090G	6 inch	Waveguide Twist

Note: Contact RFS Technologies for other lengths or flange combinations.



Waveguide to Coax Adaptor



Waveguide Transition or Flange Adaptor



Straight Waveguide Section



Waveguide Twist



H Bend and E Bend



**RFS Technologies**  
an Amphenol Company

## PRESSURIZATION PRODUCTS COMPLETE END-TO-END SOLUTIONS

**Including dehydrator to prevent moisture, condensation and degradation in performance, and a vast array of products for installation, operation, and maintenance.**

RFS Technologies, Inc. provides full range of dehydrators and accessories with flow capacity to handle customer needs in various application including radar, microwave and broadcasting antennas and transmission lines.

BD Series dehydrators employ a fully digital operating platform offering the most accurate readings of operating variables, either from the front panel or by a remote IP connection.

BD Series consist of dehydrators with various flow capacities and necessary accessories for versatile mounting, easy connection to the waveguides, air cables and antennas, and maintaining high efficiency and reliability of the dehydrators.

RFS Technologies, Inc. offers all the necessary accessories with the dehydrator. Start-up kits and manifold kits include all air fittings and manifolds for interconnection of the dehydrator with pressurizable antennas, transmission lines and feeder systems. Installation kits provide versatile mounting options. Maintenance kits are recommended to ensure the highest level of reliability and lowest lifecycle cost of the dehydrators.

For more details and ordering information of the accessories, read [datasheet](#) or contact RFS Technologies

### Pressurizable Systems



### DEHYDRATOR ORDERING INFORMATION

SERIES NAME	APPLICATIONS	MODEL NAME	DESCRIPTION
<a href="#">BD210WLP</a>	Telecom/Radar Waveguides and Antennas	BD210WLP	110-125VAC 50/60HZ DEHYDRATOR, 0.3-7.5 PSIG
		BD210WLP-V	110-125VAC 50/60HZ VERTICAL WALL MOUNTED DEHYDRATOR, 0.3-7.5 PSIG
<a href="#">BD550W</a>	Telecom/Radar Waveguides and Antennas & Broadcasting Cables and Antennas	BD550W	110-125VAC 50/60HZ DEHYDRATOR, 2-15 PSIG
		BD550WLP	110-125VAC 50/60HZ LOW PRESSURE DEHYDRATOR, 0.3-7.5 PSIG
<a href="#">BD1500W</a>		BD1500W	110-125VAC 50/60HZ DEHYDRATOR, 2-15 PSIG
		BD1500WLP	110-125VAC 50/60HZ LOW PRESSURE DEHYDRATOR, 0.3-7.5 PSIG
<a href="#">BD4200W</a>	Broadcasting Site with Long and Multiple Cables and Antennas	BD4200W	110-125VAC 50/60HZ DEHYDRATOR, 5-20 PSIG
		BD4200WLP	110-125VAC 50/60HZ LOW PRESSURE DEHYDRATOR, 0.3-10 PSIG
<a href="#">BD8400W</a>		BD8402W	208-253VAC 50/60HZ DEHYDRATOR, 0-15 PSIG

Note: 220V AC Version is available upon request



**RFS Technologies**  
an Amphenol Company

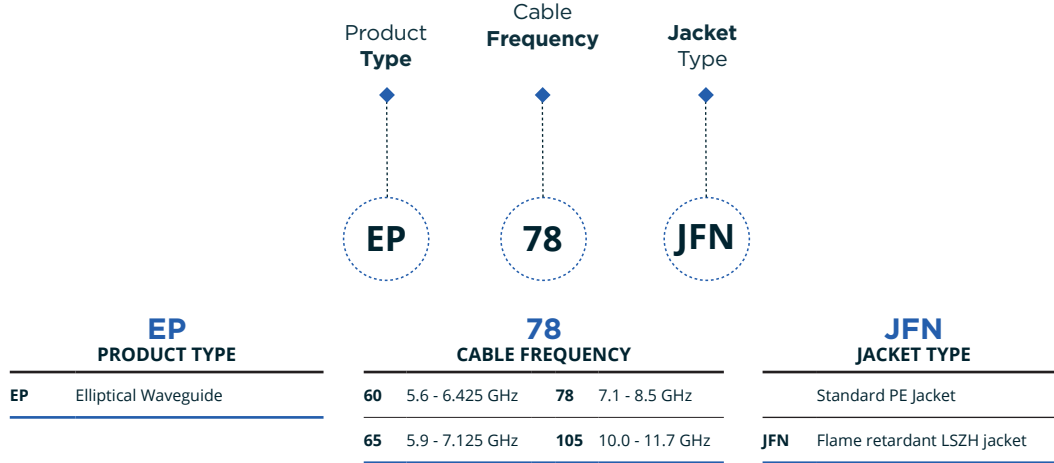
## COMPLETE SOLUTIONS

RFS Technologies, Inc. offers a full range of waveguides, connectors, twistflex, pressurization equipment, to support your waveguide system.



# UNDERSTANDING WAVEGUIDE MODEL NAMES

All **waveguide** model names are based on a naming structure that tells you:



All **twistflex** model names are based on a naming structure that tells you:



# WAVEGUIDE QUICK SHIP PROGRAM

For more information please click [here](#) or call 203.630.3311 option #2

**The waveguide quick ship program ships commonly used elliptical waveguides and related accessories in two (2) weeks from Meriden, Connecticut, USA.**

## WAVEGUIDE QUICK SHIP PROGRAM

To stay ahead of the competition, you need the power to accelerate site deployments. And you need a partner that can help you get the job done.

RFS Technologies is committed to powering your success. And we've launched our Waveguide Quick Ship program to help you achieve more and faster. With this program, waveguides and accessories are shipped from Meriden, Connecticut, USA, in two weeks from purchase order date.

## EASY ORDERING IN A ONE-STOP SHOP

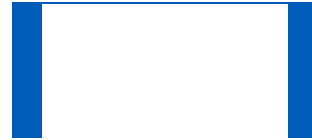
Additionally, RFS Technologies offers a full range of connectors, pressurization equipment, and accessories to support your end-to-end microwave waveguide network. We have included most-commonly used waveguides, connectors, and accessories in the Quick Ship program, which makes sure the whole package is shipped in two weeks after the order date. So, you can start site installation right after receiving these products.

We also offer technical support, field and classroom training, and BoM generation assistance.

## FASTER ACCESS TO THE BEST ELLIPTICAL WAVEGUIDES IN THE INDUSTRY

RFS Technologies' elliptical waveguide products have been used in thousands of successful installations. They are the highest-quality, best-performing, and most reliable elliptical waveguides in the industry.

RFS Technologies has carefully chosen the most popular elliptical models. With streamlined manufacturing and expanded capacity, we can ship selected waveguides without compromising on testing, cutting, and re-reeling processes. You are guaranteed to receive products compliant with published specifications and your cut length requirements.



## Maximum Order Quantities Covered under Quick Ship Program

	Unit	5/6 GHz System		6 GHz System		10/11 GHz System	
		Model Numbers	QTY	Model Numbers	QTY	Model Numbers	QTY
Elliptical Waveguide	ft	EP60	3000	EP65	5000	EP105	3000
Fixed Tuned Connector	pc	C137-060FG	20	C137-065FG	20	C90-105FG	20
Tunable Connector	pc	C137-060TG	20	C137-065TG	20	C90-105TG	20
Grounding Kit	pc	GKIT-60-060	60	GKIT-60-065	90	GKIT-60-105	60
Hanger Kit	Kit of 10pcs	CLAMP-060	100	CLAMP-114	150	CLAMP-105	100
Hoisting Grip	pc	HOIST1-158L	20	HOIST1-158L	30	HOIST1-78L	20
Angle Member Adapter Kit	Kit of 10pcs	ANGLE-CLPI	100	ANGLE-CLPI	150	ANGLE-CLPI	100
4" Boot	pc	BOOT4-060	20	BOOT4-065	30	BOOT4-105	20
Twistflex	pc	TF137-CC1-036I	20	TF137-CC1-036I	30	TF090-CC1-036I	20
Pressure Window	pc	PW-C137	20	PWC-137	20	PW-C090	20

- Note:
1. Specify waveguide performance (STD or PREM) on purchase order.
  2. Does not include connector assembly.
  3. Larger order quantities can be shipped within 4-6 weeks.



**RFS Technologies**  
an Amphenol Company

## NOTES

[illegible]



## NOTES

[illegible]



an Amphenol Company